

# RIVER HUMBER CLAY HUTS DEPOSIT AREA

DEPTHS IN METRES  
SCALE 1 : 2500  
SURVEYED BY

Harbour Master, Humber  
ASSOCIATED BRITISH PORTS  
19th June 2024

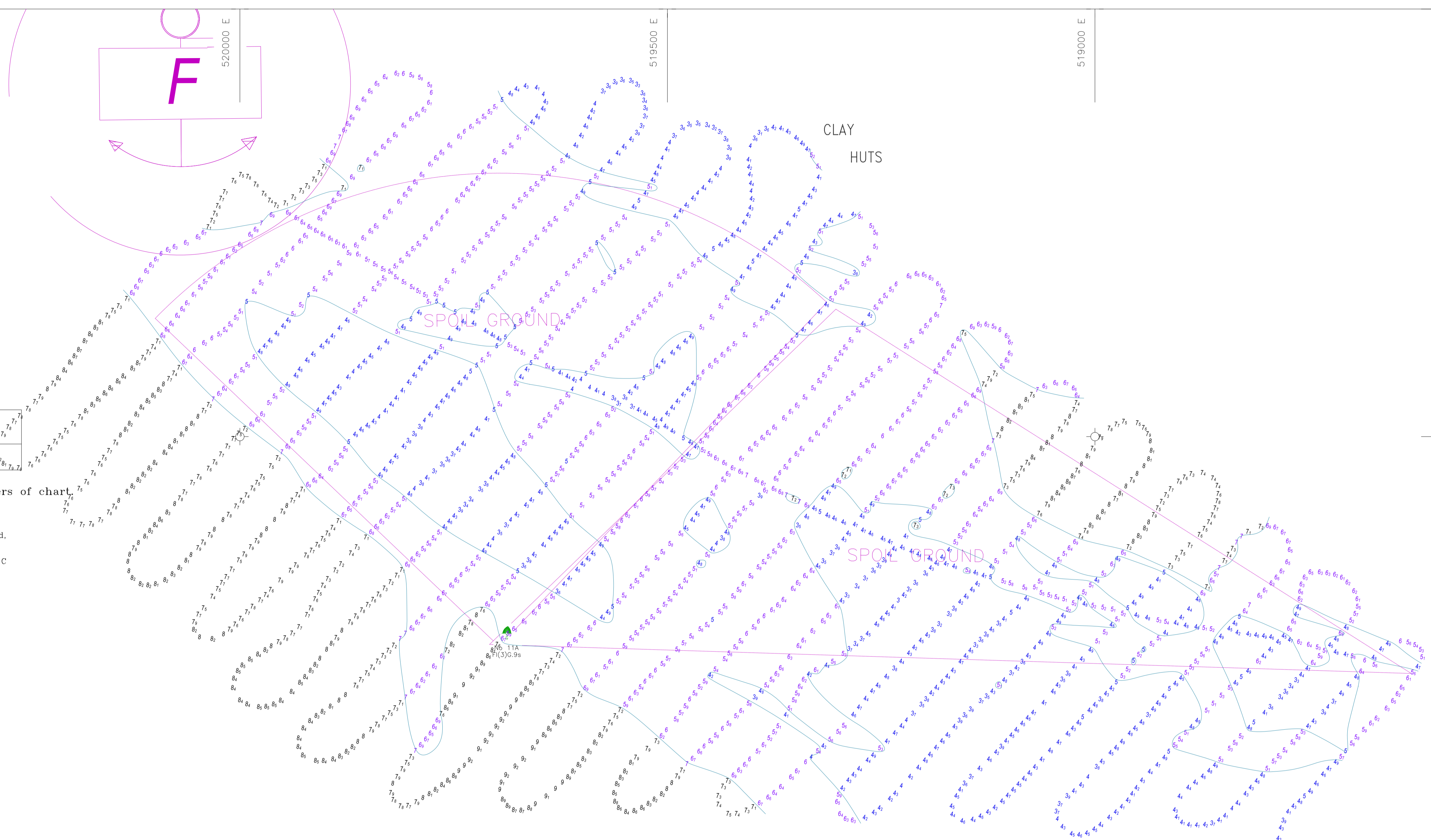
Depths are in metres and decimetres reduced to the chart datum given below  
Underlined figures are drying heights in metres and decimetres above chart datum

TIDAL LEVEL AND CHART DATUM

PLACE	Heights in metres above Chart Datum				Chart Datum and remarks
	M.H.W.S.	M.H.W.N.	M.L.W.N.	M.L.W.S.	
IMMINGHAM		5.8	2.6	0.9	3.9m below O.D. Newlyn Being approx. L.A.T.

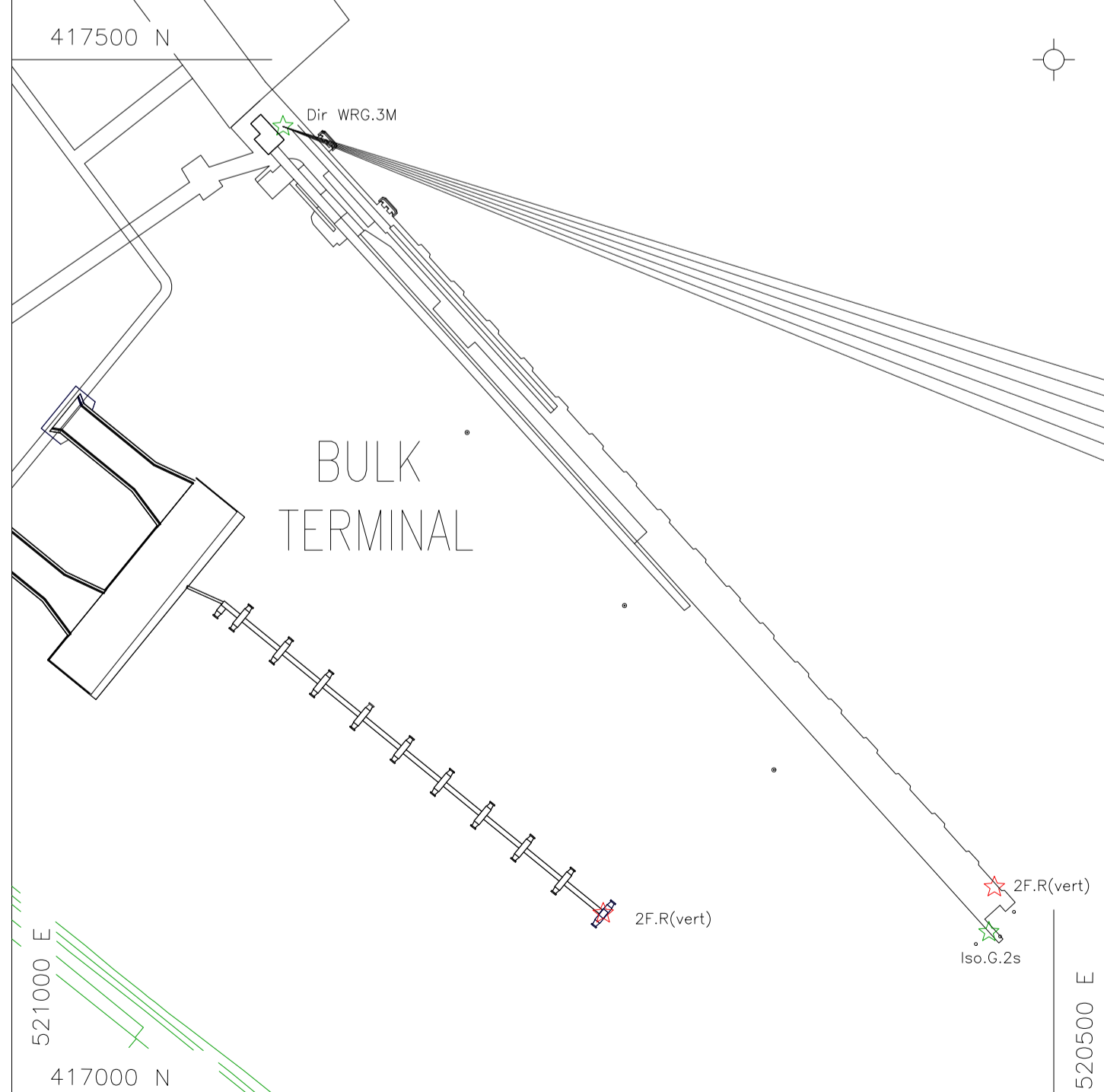
Projection :- Transverse Mercator. National Grid references are given along borders of chart.

Whilst every care was taken in the preparation of this Chart, which is intended to provide Mariners with the data which Associated British Ports possessed at the time of its preparation, ABP gives notice that thereafter, on account of the quickly shifting character of the river bed, no warranty is afforded that such data can be relied upon and, further, no responsibility can be accepted by ABP for any inaccuracy in the Chart or omission therefrom.  
Bathymetric soundings shown on this chart are collected to the U.K.H.O. standard: CATZOC C



H.I.T. TERMINAL

BULK TERMINAL



F.G  
Iso.G.1s  
F.W.  
Iso.R.1s  
F.R

7.3

Metres

1000

0

100

Metres